



Southern California Edison Backgrounder

Corporate Communications: 626-302-2255, www.edison.com/pressroom



Southern California Edison Company Profile

Southern California Edison (SCE) is one of the nation's largest investor-owned electric utilities, serving nearly 14 million people in 15 counties of Central, Coastal and Southern California. Based in Rosemead, Calif., the utility has been providing electric service in the region for 125 years. SCE is a subsidiary of Edison International (NYSE: EIX), which also is headquartered in Rosemead.

SCE's service territory includes about 430 cities and communities with a total customer base of about 4.9 million residential and business accounts. As of Dec. 31, 2010, SCE had consolidated assets of \$35.9 billion. SCE is regulated by the California Public Utilities Commission and the Federal Energy Regulatory Commission.



Generation

SCE generates about 41 percent of the electricity it provides to customers, with an owned

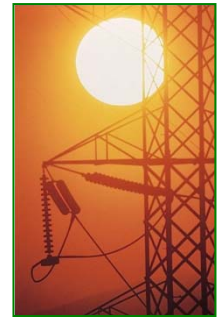
generation capacity of 5,301 megawatts. Major energy-producing assets include San Onofre Nuclear Generating Station in San Clemente, Calif.; Mountainview Power Company, LLC, a natural gas-fired plant in Redlands, Calif.; hydroelectric facilities in the Sierra Nevada and San Bernardino Mountains; new solar generation projects; and part ownership in several other plants.

Fuel Mix

Preliminary 2010 data subject to update shows the company provided electricity to its customers generated by the following fuel types: 37 percent natural gas; 19 percent nuclear; 18 percent eligible renewables (solar, wind, small hydro, biomass and geothermal); 7 percent coal; and 6 percent large hydroelectric. In 2010, SCE, the nation's leading purchaser of renewable energy, delivered 14.5 billion kilowatt-hours of renewable energy to its customers.

Power Grid

SCE has an extensive transmission and distribution system that includes approximately 12,196 miles of transmission and subtransmission circuits, 104,706 miles of distribution circuits and more than 900 substations. In order to continue powering Southern California's growing population and economy, SCE plans to invest \$14.1 billion over the next four years to expand and strengthen its electric system infrastructure.



SCE operates one of the smartest grids in North America. During the summer of 2007, it activated the most advanced neighborhood distribution circuit in

operation, a test bed for the latest innovations in power delivery that are producing more reliable service with fewer, shorter outages.

Energy Efficiency and Demand Response

During the past five years, SCE energy efficiency programs have helped customers save more than 8 billion kilowatt-hours, enough energy to power more than 1.2 million homes for a year. SCE employs a full range of demand response programs that provide financial incentives and other benefits to its business and residential customers who reduce or shift power consumption when statewide energy supplies are low.

Edison SmartConnect

In 2009, the company began installing new smart meters as part of its SmartConnect program. The advanced electricity meters will provide new data along with options to help customers manage their electricity use and bills. SCE plans to install about 5 million smart meters in its service territory by the end of 2012.



0711LGB